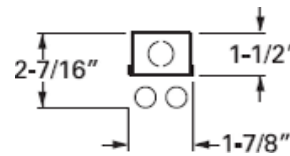


MIROR FLUORESCENT STRIP

MS
T5 & T8

- ◆ T5 lamps maintain over 95% of their original output
- ◆ T8 lamps maintain over 90% of their original output
- ◆ For additional lighting control and energy savings - occupancy sensor is available
- ◆ Easy tool-less electrical access
- ◆ Electronic ballast standard
- ◆ All reflective surfaces constructed of enhanced specular anodized aluminum
- ◆ Housing constructed of heavy gauge die-formed cold rolled steel
- ◆ Available with Y-hanger and chain, Gripple Hang-Fast Suspension
- ◆ All parts painted after fabrication for safe handling and rust prevention
- ◆ UL listed for U.S. and Canada
- ◆ Optical Efficiency = > 92%



CRI = 85, High output lamps can be requested
 High Frequency Electronic Ballast > 40 Khz
 5 Year Ballast Warranty
 High Power Factor > 98%

ORDERING GUIDE

MS	5	-	2L	-	OS	-	2B	-	UNV
SERIES	TYPE		TOTAL LAMPS		OPTIONS		BALLAST TYPE		VOLTAGE

SERIES

MS MIROR Strip Fixture

TYPE

5 54 watt T5HO
 8 32 watt T8

LENGTH

- 4' unit
 8FT Tandem 8' unit

TOTAL LAMPS

(T5 ship w/ fixtures - 841K)
 (T8 ship w/ fixtures - 741K)

1L 1 lamp
 2L 2 lamps
 4L 4 lamps

OPTIONS (ship with fixture)

OS Occupancy Sensor*
 6C Cord, 6' length
 6C15TP 6' black cord, 18/3, 15A
 NEMA Twistlock plug (voltage specific)
 6C20TP 6' black cord, 18/3, 15A
 NEMA Twistlock plug (voltage specific)
 F54/850 Fluorescent lamp, 54 watt, 850K
 F32/841 Fluorescent lamp, 32 watt, 841K (CEE Approved)
 F32/850 Fluorescent lamp, 32 watt, 850K
 E5 Emergency ballast, T5
 E8 Emergency ballast, T8

ACCESSORIES (ship separately)

Y Y-hanger (1 pair)
 Y3 Y-hanger & 3' chain (1 pair)
 G10 Gripple Hang-Fast Suspension,
 10' length (1 pair)

BALLAST TYPE

1B (1) 1 lamp ballast
 2B (1) 2 lamp ballast
 4B (1) 4 lamp ballast
 22B (2) 2 lamp ballasts
 (CEE Approved Ballast Available)

VOLTAGE

120 120V
 208 208V
 240 240V
 277 277V
 UNV 120 - 277V
 347** 347V
 480** 480V

* Fixtures equipped with occupancy sensor must have a specified input voltage
 ** Only available in 2 lamp ballasts

